

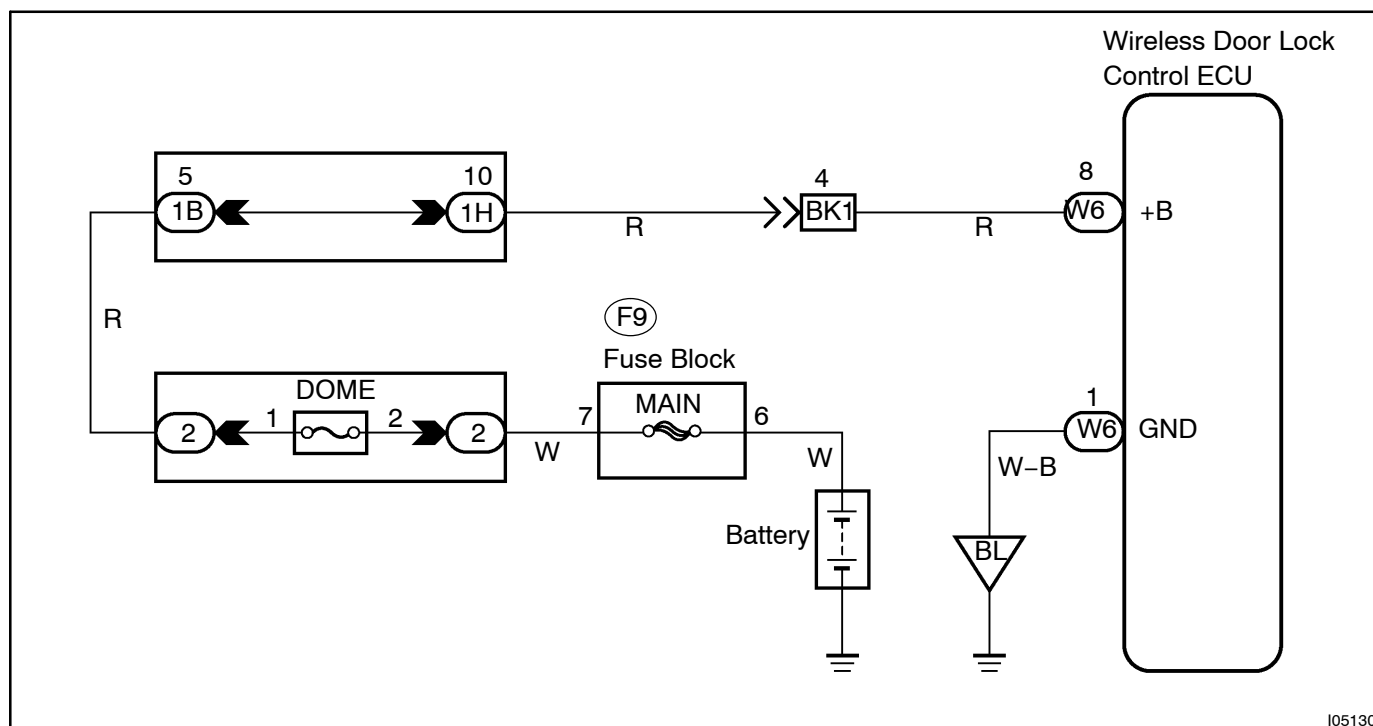
## CIRCUIT INSPECTION

## ECU Power Source Circuit

## CIRCUIT DESCRIPTION

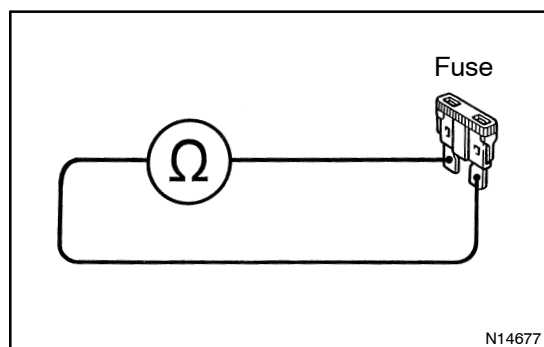
Battery positive voltage is always applied to the terminal +B of the wireless door lock ECU.

## WIRING DIAGRAM



## INSPECTION PROCEDURE

1	Check DOME fuse.
---	------------------



**PREPARATION:**

Remove DOME fuse from engine room junction block.

**CHECK:**

Check continuity of DOME fuse.

**OK:**

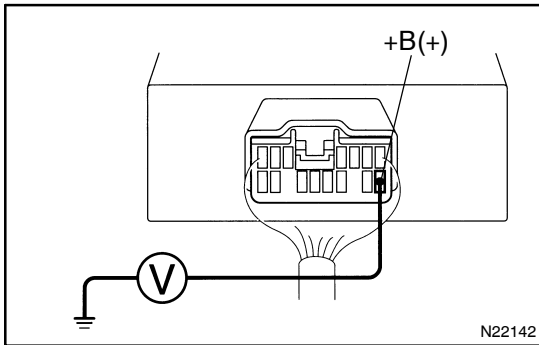
### Below 1.0 $\Omega$ or continuity

NG

**Check for short in all the harness and components connected to DOME fuse.  
(See attached wiring diagram.)**

**OK**

## 2 Check voltage between terminal +B of ECU connector and ground.



### PREPARATION:

Remove the wireless door lock ECU from No.1 instrument panel brace.

### CHECK:

Measure voltage between terminal +B of ECU connector and ground.

### OK:

**Voltage: 10 – 14 V**

OK

Proceed to next circuit inspection shown in matrix chart (See page [DI-765](#)).

NG

## 3 Check for open in harness and connector between terminal GND of ECU and body ground (See page [IN-29](#)).

NG

Repair or replace harness or connector.

OK

Check and repair harness and connector between ECU and battery.